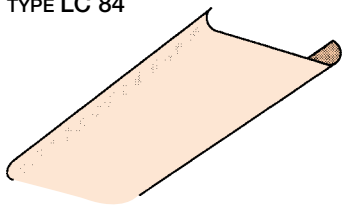


... ALUMINIUM STRIPES SUN LOUVERS AND CLADDINGS ...

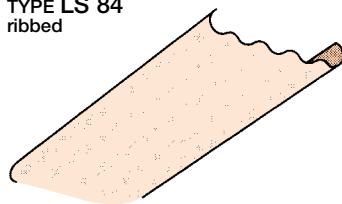
LINEAR OPEN FAÇADES - SUN BREAKERS

TECHNICAL CARATHERISTICS OF THE LC 84 FRANGISOLE FOR OUTSIDE

TYPE LC 84



TYPE LS 84
ribbed



TECHNICAL SPECIFICATION

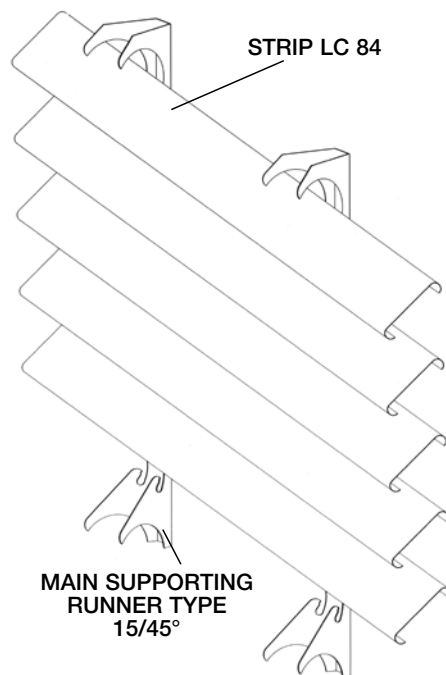
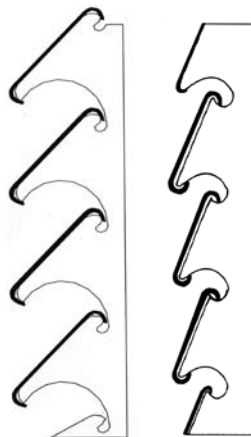
External cladding with linear stripes mm. 84 METALSCREEN type "LC FRANGISOLE" sun breaker to obtain a sun louver with inclination degrees 30° or 45° (the inclination 30° or 45° and colour choosed by the consultant).

The stripes are made of preapainted aluminium corrosionproof incombustible class "0" - Euroclass fire reaction A1 width mm. 84 with round angles and thickness of mm. 0,6.

The "LC FRANGISOLE" sun breaker will be installed clip-on main supporting carriers installed each mm. 600 between the carriers are made of preapainted aluminium thickness mm. 1,00 and colour white on both sides.

MAIN SUPPORTING RUNNERS

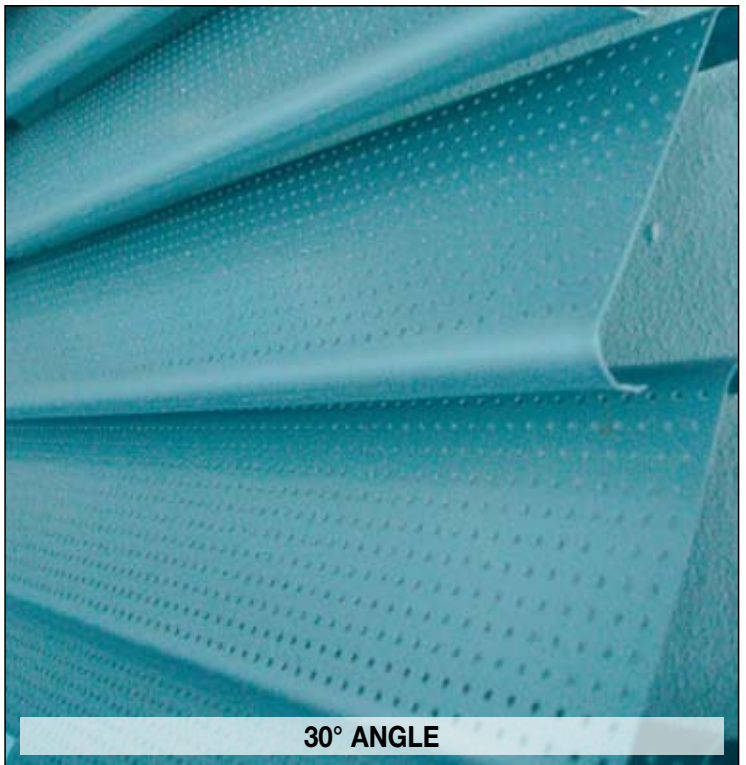
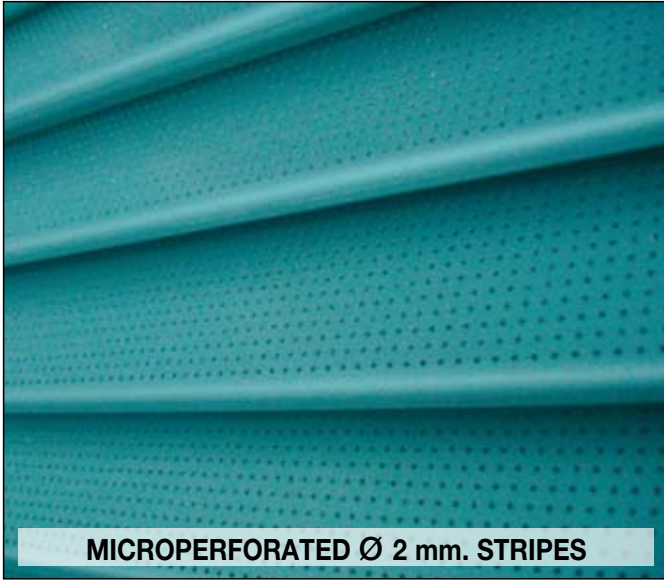
15/45° 15/30°

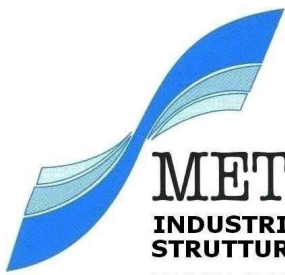


INDICATIVE MATERIAL INCIDENCE PER M ²		
Strip Type	LC/45° LS/45°	LC/30° LS/30°
Strips (ml.)	11,54	14,50
Main Carriers (Kg/mq.)	1,40	1,40

TO OBTAIN MORE SOUND ABSORPTION AND NOISE PROTECTION, THE LINEAR STRIPLES AVAILABLE MICROPERFORATED Ø mm. 2







METALSCREEN[®] S.P.A.

**INDUSTRIA PRODUZIONE CONTROSOFFITTI
STRUTTURE E PROFILATI METALLICI**

**FALSE CEILINGS INDUSTRY BUILDING PROFILES
AND SUSPENSION SYSTEMS FACTORY**



41030 BOMPORTO MODENA- ITALY EU

Via Aldo Moro, 38

Tel. +39 059 8170611

Fax +39 059 8170633

Fax +39 059 8170632 export

www.metalscreen.it

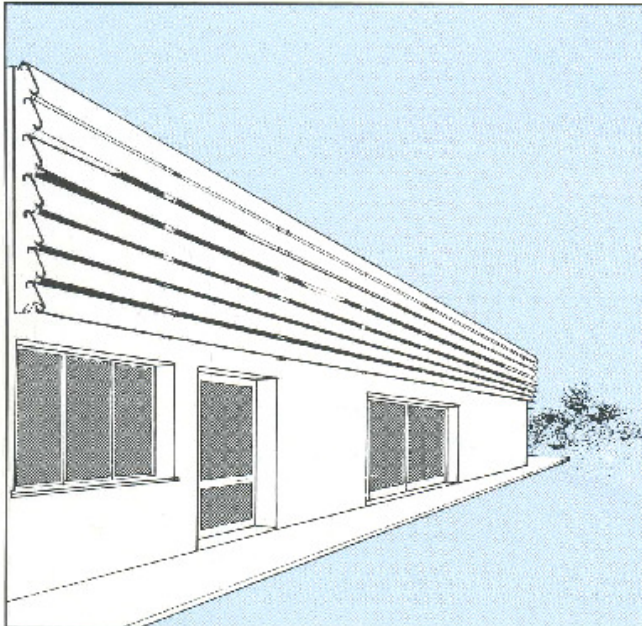
metalscreen@metalscreen.it

PRODOTTI CON NORMATIVA EUROPEA CERTIFICATA



EUROPEAN TEST APPROVAL

EN 13964 : 2007 - EN 14195 : 2005

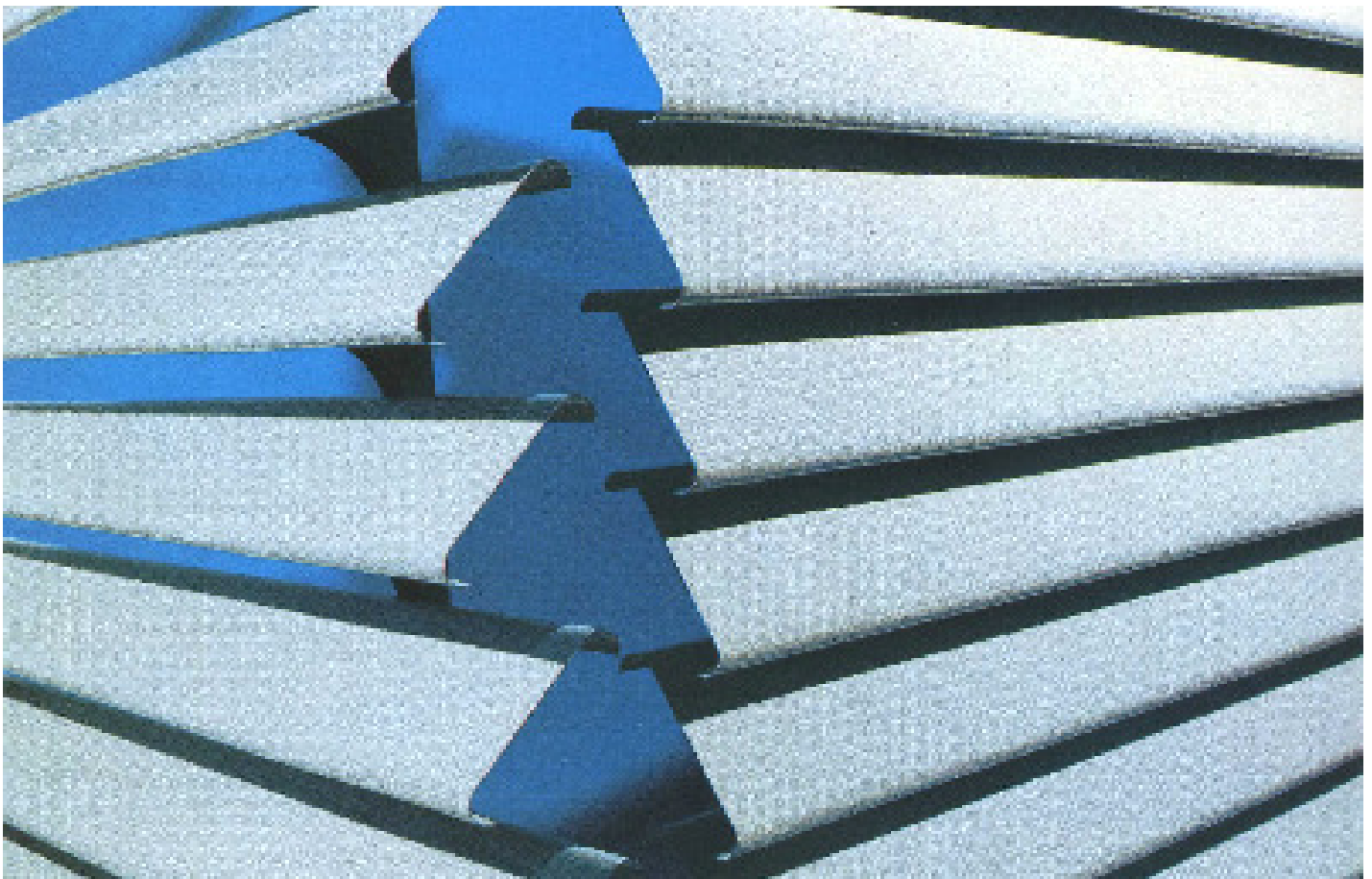


Le doghe serie FRANGISOLE, vengono utilizzate come schermi o rivestimenti esterni, rinnovando l'architettura degli edifici.

Hanno inoltre la caratteristica di abbattimento della luce diretta, pur conservandone una notevole quantità.

Sun break staves are used as screens or outside coverings, renewing the architecture of the buildings.

Moreover they have the characteristic of breaking direct light, although they preserve a conspicuous quantity.



Stabilimento ed Amministrazione - Head office and factory:

VIA ALDO MORO, 38 - 41030 BOMPORTO - MODENA - ITALY EU

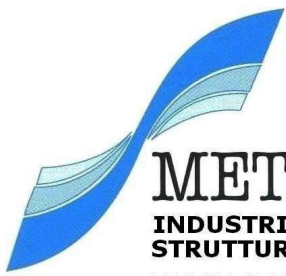
Tel. + 39 059 8170611 - Fax. +39 059 8170633 - www.metalscreen.it - metalscreen@metalscreen.it

P. IVA (VAT Number) 01906840366 - Codice Fiscale 01107090449

Azienda con Sistema di Gestione Qualità Certificata - Quality Management System Operated UNI EN ISO 9001



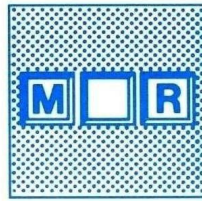
ISO 9001



METALSCREEN[®] S.P.A.

**INDUSTRIA PRODUZIONE CONTROSOFFITTI
STRUTTURE E PROFILATI METALLICI**

**FALSE CEILINGS INDUSTRY BUILDING PROFILES
AND SUSPENSION SYSTEMS FACTORY**



41030 BOMPORTO MODENA-ITALY EU

Via Aldo Moro, 38

Tel. +39 059 8170611

Fax +39 059 8170633

Fax +39 059 8170632 export

www.metalscreen.it

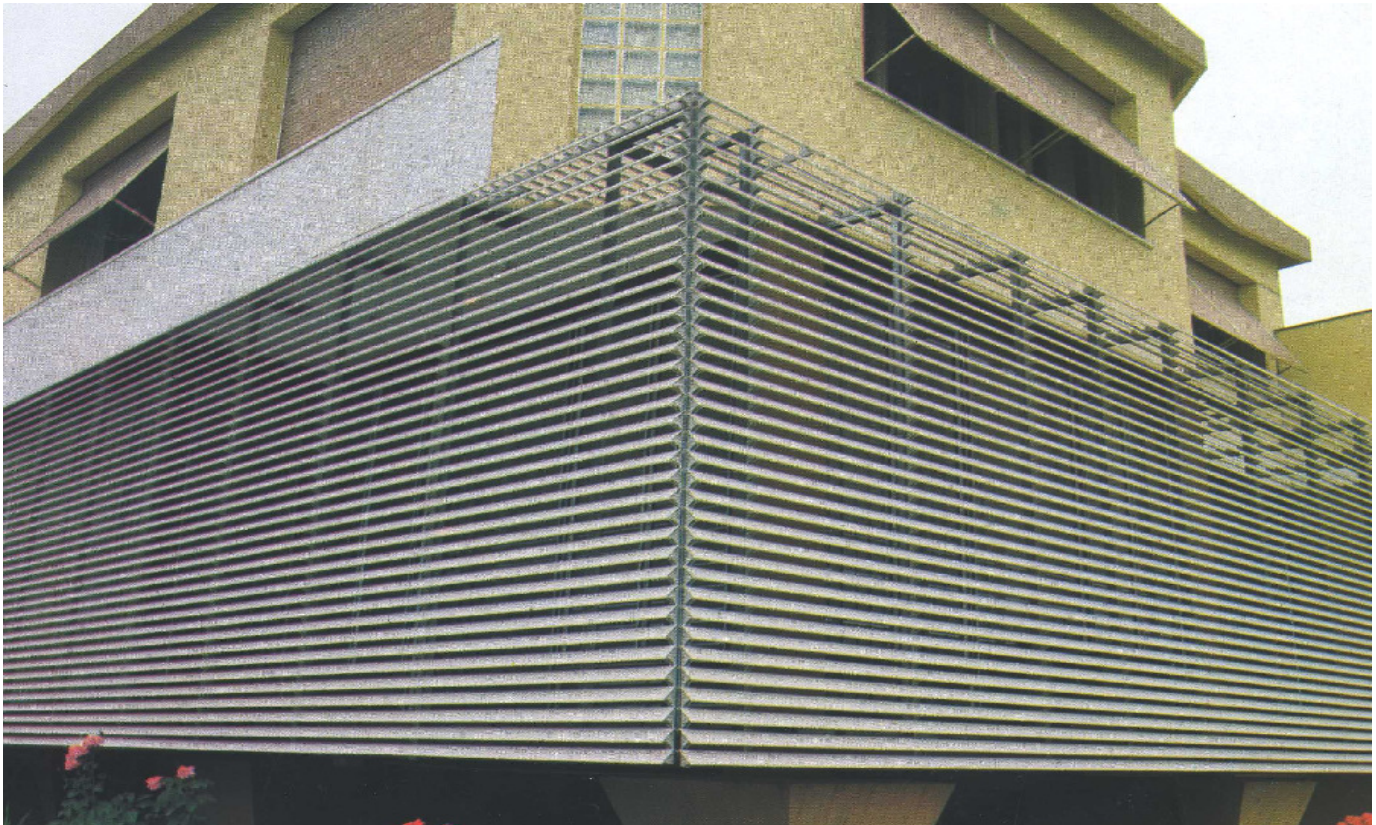
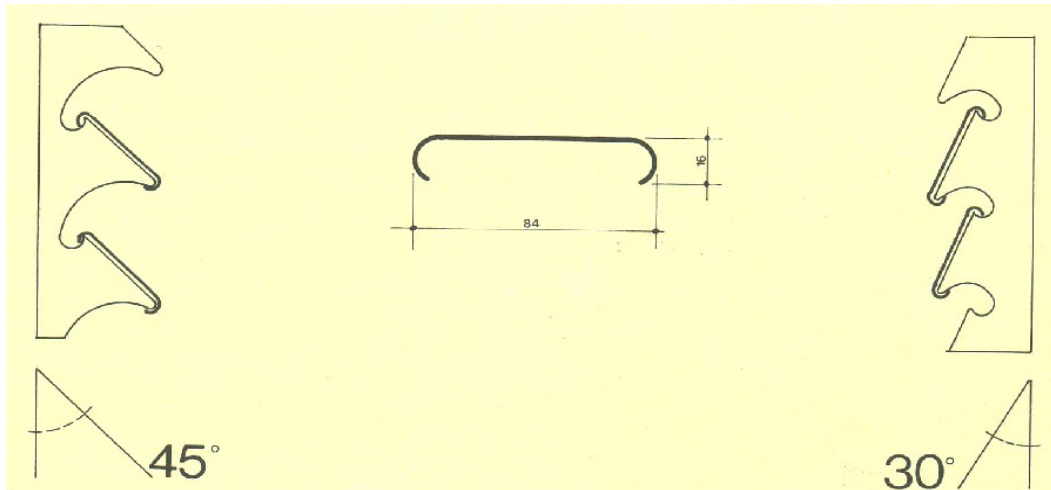
metalscreen@metalscreen.it

**PRODOTTI CON NORMATIVA EUROPEA CERTIFICATA
EUROPEAN TEST APPROVAL**

CE EN 13964 : 2007 - EN 14195 : 2005

Le doghe vengono ricavate da nastro in alluminio preverniciato, su uno o due lati, dello spessore di mm.0,6.
L'inclinazione di 30° o 45° delle doghe è data dalla diversa scelta della traversina di supporto.

The staves are made up from pre-painted aluminium belt, on one or two sides, thickness mm.0,6.
The inclination of 30° or 45° of the staves is given by the different choice of the bearing ties.



Stabilimento ed Amministrazione - Head office and factory:

VIA ALDO MORO, 38 - 41030 BOMPORTO - MODENA - ITALY EU

Tel. + 39 059 8170611 - Fax. +39 059 8170633 - www.metalscreen.it - metalscreen@metalscreen.it

P. IVA (VAT Number) 01906840366 - Codice Fiscale 01107090449

Azienda con Sistema di Gestione Qualità Certificata - Quality Management System Operated UNI EN ISO 9001



ISO 9001